

---

## LETCHEMORE HEATH VILLAGE TRUST- WHAT WE DO

---

The principal purpose of the Village Trust is to preserve and enhance the quality of Village life in Letchmore Heath. The Trust will work with other interested parties, to contest and fight proposals and developments that threaten this objective.

---

Specifically, the Trust:

- Reviews all planning applications for the Village, surrounding countryside and any planning applications in the local area that will have an adverse effect on Village life ( recent examples include: Solar Plant, Aerodrome and Theobold Street initiatives.)
- Conducts annual reviews with local police of any Village safety issues, and of any specific incidences in the Village as and when they occur.
- Reviews road and traffic issues and solutions with council and highway planners – including the plan to introduce a 20 mph traffic speed limit through the Village.
- Liaises with Elstree Aerodrome, Bahktivedanta Manor, Aldenham School – and the Three Horseshoes! - on key issues affecting the Village.
- Monitors and seeks to control litter and dumped items in and immediately around the Village, undertakes litter collections and liaises with local and county authorities where there is a need for large item removal. **Litter picking volunteers are always welcome!**
- Liaises with Aldenham Parish Council on their area of responsibility affecting the Village, in particular the maintenance of the Village pond, trees and the children's playground.
- Maintains a website with relevant details on planning objections and other Village issues. Keeps details of historical information relating to the Village.
- Undertakes any and all specific projects that benefit the Village as a whole - for example the introduction of Fast fibre broadband, improvement of pedestrian access for Villagers, etc.



### \*\*\* PLEASE \*\*\*

- join the Trust and pay this year's subscription.
- let the Trust have your email address.
- consider volunteering for litter collection activities (contact Alison / Linda).
- visit the Village website regularly for updates at: [www.letchmoreheath.com](http://www.letchmoreheath.com)

---

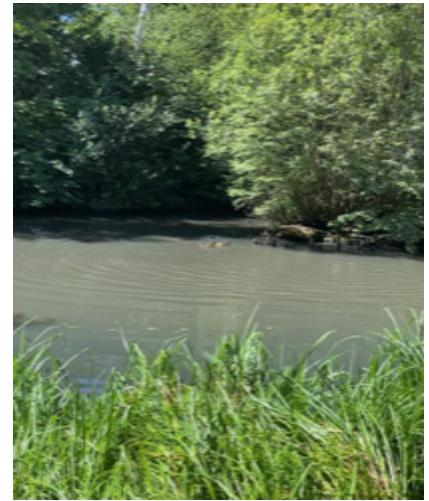
### CONTACTING YOU

The Trust would like to be able to contact you – both for communication and when seeking Villagers' views on key local matters, e.g. traffic proposals. If you're happy to hear from us occasionally, please send a blank email to: [alison.rose111@gmail.com](mailto:alison.rose111@gmail.com) simply entitled "please add (insert your name) to the Trust's email list"

The Trust's activities are undertaken by an annually elected Committee of Villagers who meet monthly and give their time and expertise on a voluntary basis. The Trust organises an Annual Village Meeting which includes the LHVT AGM, to which all Villagers are invited. AGM minutes are available on the Village website.

No expenses are incurred for the majority of the Trust's core activities. However some ad hoc, specific expenses are unavoidable and these are funded by Village resident subscriptions of £10 p.a. per household. Specific expenditure can include:

- Remembrance Day wreath
- Occasional expenses in connection with maintenance of Village website
- Litter picking equipment
- AGM refreshments
- Village Christmas tree
- Occasional donations in support of Village wide events e.g. Platinum Jubilee.



### \*\*\* MEMBERSHIP \*\*\*

If you wish to support the work of your Village Trust, **annual membership subscriptions are £10 per household**. Members may vote on issues affecting Letchmore Heath and propose and second Villagers for election to the Trust Committee at the AGM.

Collections are underway for the current year and your £10 subscription can be made by:

- Cash or cheque (to LHVT) delivered to the treasurer, Janet Engels, Heath Cottage Common Lane ( please include your name if delivering cash)
- Direct bank transfer to LETCHMORE HEATH VILLAGE TRUST at Barclays Bank – Sort Code 20-29-77 Account Number 03074250

**Or preferably, please set up an annual standing order to LHVT.**

## CONTACTING US

Please feel free to contact any LHVT Committee member on issues undertaken by the Trust- it works on your behalf and needs to know your concerns. You can speak to or email:

Alan Lambert

[alanhlambert@btinternet.com](mailto:alanhlambert@btinternet.com)

Linda Lambert

[lindalambert30@btinternet.com](mailto:lindalambert30@btinternet.com)

Alison Rose

[alison.rose111@gmail.com](mailto:alison.rose111@gmail.com)

Greg Rogers

[gsrogers@gmail.com](mailto:gsrogers@gmail.com)

Janet Engels

[janetengels@hotmail.com](mailto:janetengels@hotmail.com)

Mike Pickford

[micheal.pickford@btinternet.com](mailto:micheal.pickford@btinternet.com)

Naz Mohammed

[n.mohammed1@btinternet.com](mailto:n.mohammed1@btinternet.com)

Gareth Tinsley

[gareth@tvg ltd.com](mailto:gareth@tvg ltd.com)

**MARCH 2023**